



We Make It Work Better.



LIFE SCIENCES SKIDS AND CAPABILITIES

Providing hygienic processing equipment and customized services

Since 1885

www.mgnewell.com

www.newellautomation.com

M.G. Newell is a full-service provider of hygienic solutions for the bio-tech, pharmaceutical and other sanitary processing industries. We partner with customers to design and fabricate cost-effective, customized systems to fit their requirements. Our goal is to provide a solid experience; streamlining your project utilizing our engineering, design, fabrication, automation and installation capabilities.

Our customers represent the world's largest manufacturers of parenteral and solid dose pharmaceuticals, personal care products, OTC medicines, testing kits, and more. To help them meet consumer expectations, we strive to support their goals of hygienic processing from start to finish.

Functional safety and reliability are not theoretical product advantages – we know they are essential properties in life sciences applications. Therefore, our engineers build sanitary design into every system, from pump carts to WFI loops to valve clusters to process filtration systems to new greenfield installations.

Our Newell Automation controls team will identify the appropriate instrument and control functionality for your process. With automation hardware, software controls, control panel design and fabrication, we provide turnkey solutions for CIP, batching, blending and other processes.

Greensboro Division/Corporate

336-393-0100

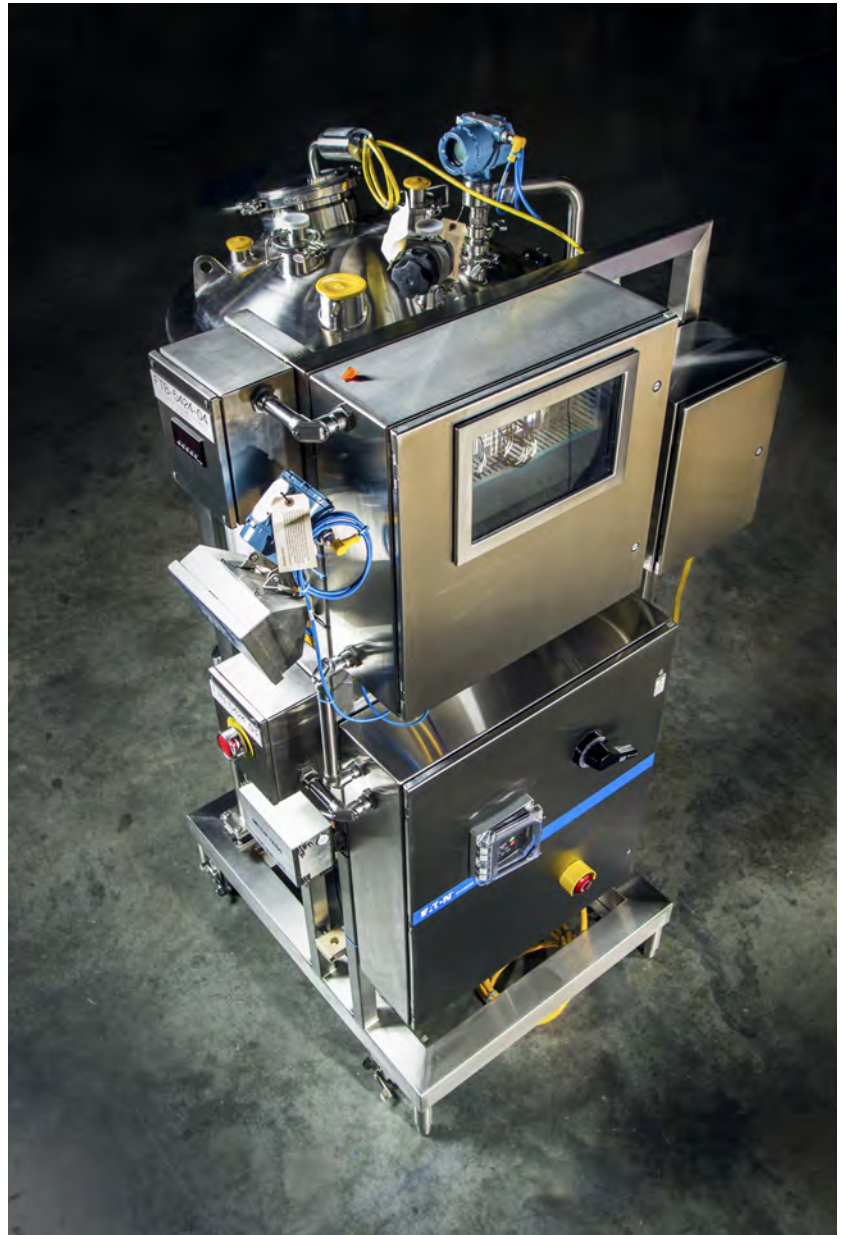
Louisville Division

502-459-7475

Nashville Division

615-822-3030

sales@mgnewell.com





Skidded systems offer faster time to market, higher quality fabrication and provide flexible, efficient use of space.



Optional designs are available to meet NEMA-4 and/or explosion-proof environments.

Our systems meet and often exceed compliance to FDA and ASME BPE standards.

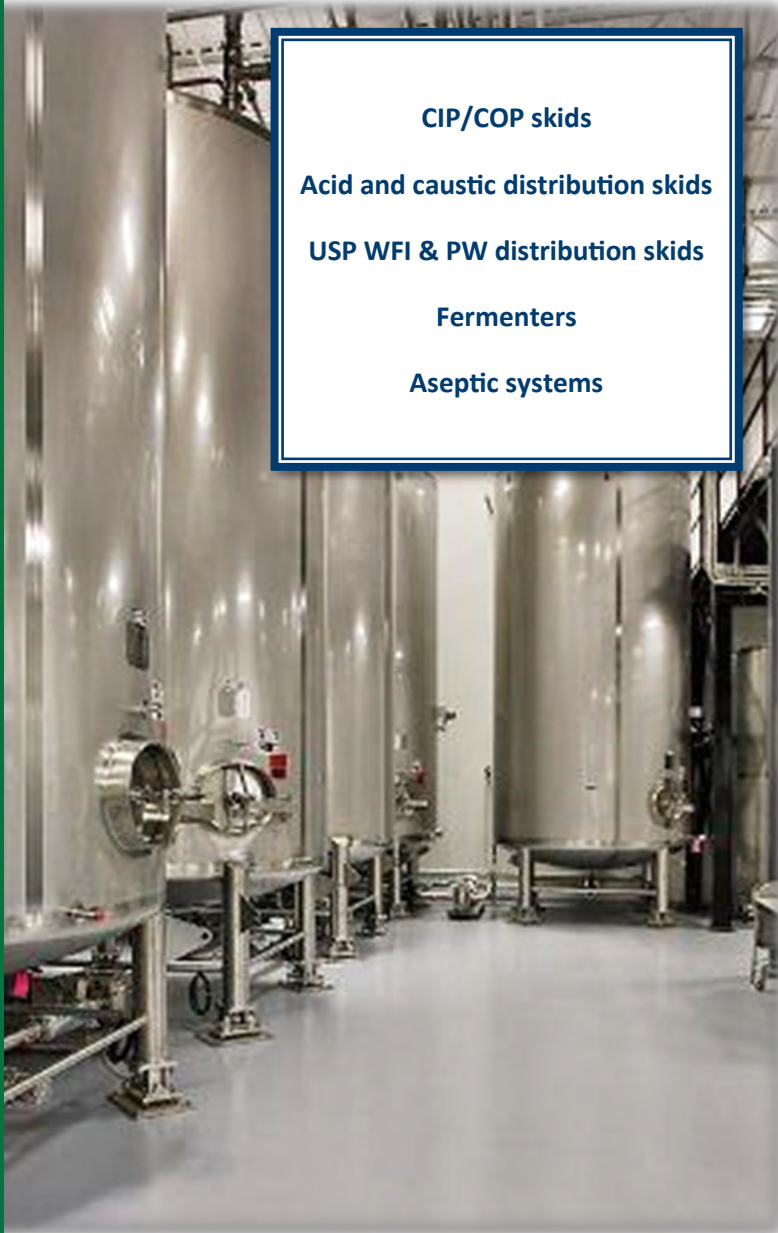
Process filtration

Ingredient distribution

Viral inactivation

Media prep and buffer distribution systems





CIP/COP skids
Acid and caustic distribution skids
USP WFI & PW distribution skids
Fermenters
Aseptic systems



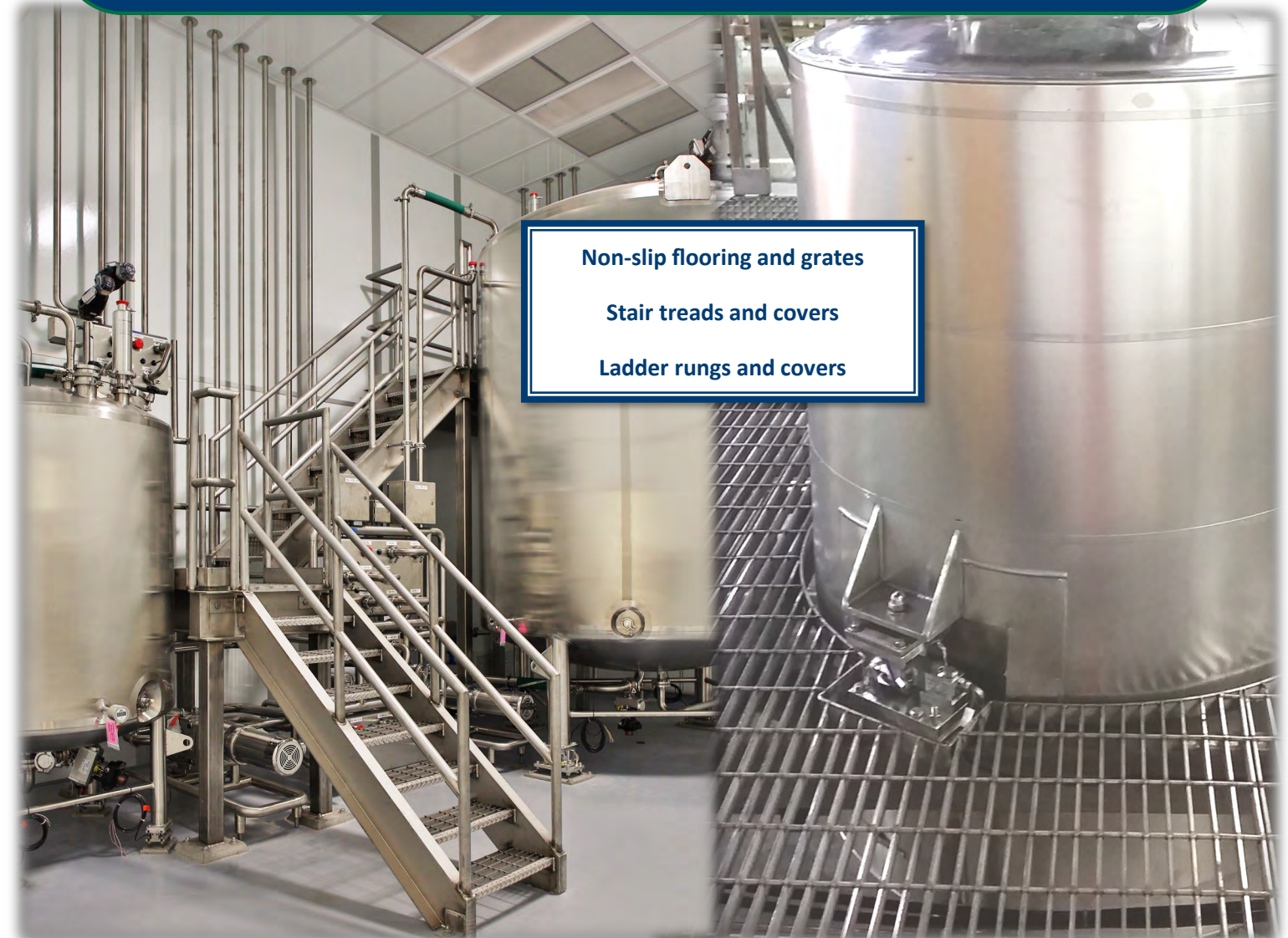
Single-wall or jacketed tank designs
Fully customizable layouts
Various agitation options available
Electropolishing and passivation available
Single or multi-tank systems

Tanks and vessels are configured to meet ASME BPE design and construction.





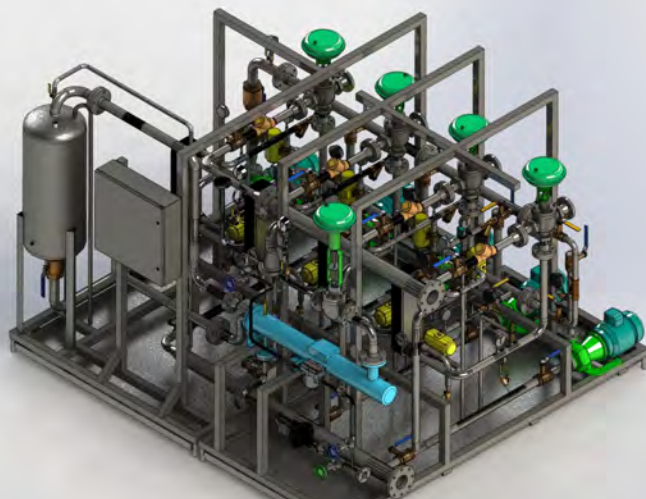
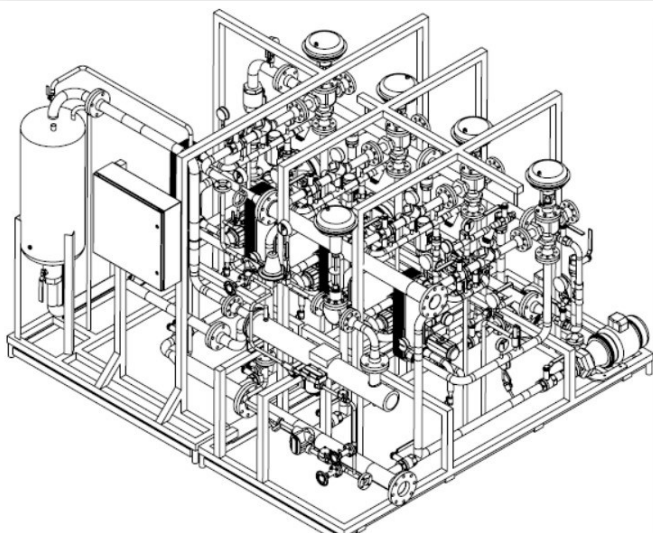
Fabrication of clean room quality stainless steel platforms, floor grating, stairs and handrails.



Non-slip flooring and grates

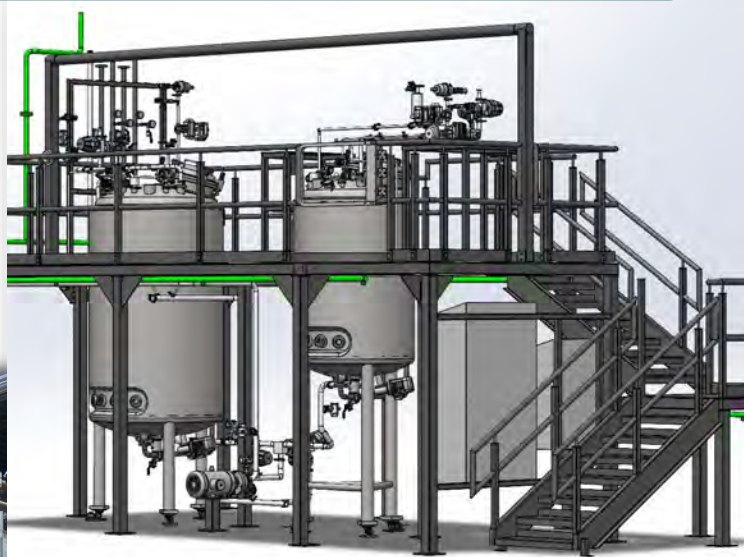
Stair treads and covers

Ladder rungs and covers



Our engineers incorporate user-friendly design into every system—all while meeting your budget.

General Arrangement Drawings
Piping & Instrumentation Diagrams
3D Solid Works Modeling/Drawings
Construction Drawings
As-Built Drawings





Clean steam
Skidded utility sets
Temperature control modules
Utility filtration skids
Stainless steel In-line water heaters

Precise temperature control
Energy efficient
Batch and continuous processing
Process monitoring and control





Single-use systems and controls
Ergonomically designed for loading and
unloading bag and tube sets
Single-use automation and sequence
programming

Valve clusters
Liquid degassing and gassing
systems
CO₂ and O₂ measurement





Greenfield and upgrade
installations

Custom engineered designs

Isometric piping diagrams

Our experienced installation teams communicate and work effectively with your plant personnel.



Material Test Reports

Electropolish certificates

Weld log/data Sheets

Weld mapping

Digital weld video reports

Piping and Instrumentation Drawings





PLC design and programming

HMI design and programming

Control panel design and
fabrication

Audits and retrofits

Delta V control panels

UL-508A Certified Panel Shop

Panels meet NFPA, NEC and UL-508 regulations

NEMA 4x and explosion proof panels optional

Factory and Site Acceptance testing

SCADA systems

Rockwell Automation Recognized System
Integrator



10



**Rockwell
Automation**
Recognized
System
Integrator

Working along with our process engineers, our controls team can identify the appropriate instrumentation and control functionality for your process.

Hardware and software specification

Program development

Support and training

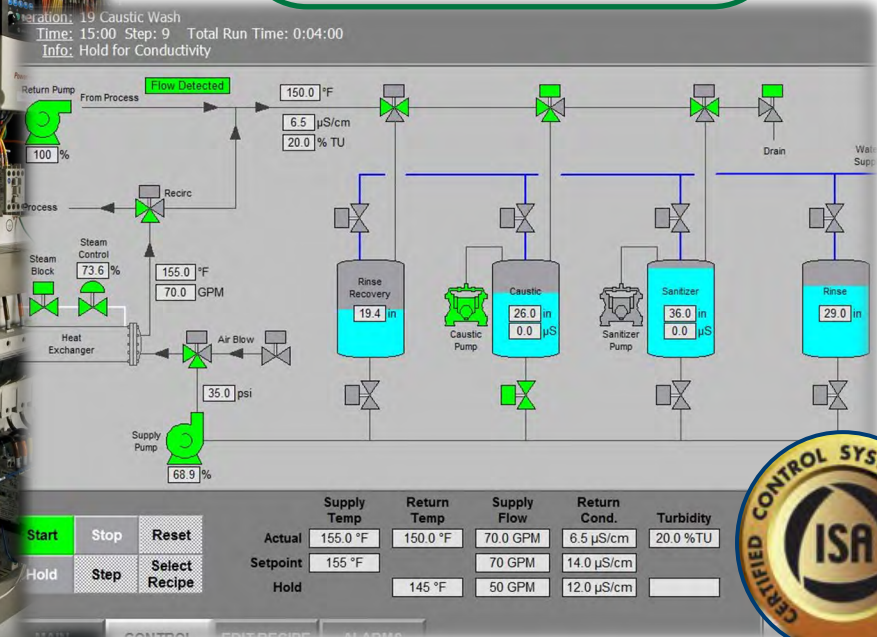
Instrument wiring schematic

Network architecture diagrams

Control loop diagrams

Ignition!

Registered
Integrator





We Make It Work Better.



Providing sanitary processing equipment and customized services since 1885

Email: sales@mgnewell.com

**Greensboro Division
Corporate Headquarters**

301 Citation Court
Greensboro, NC 27409
Phone: 336-393-0100
Fax: 336-393-0140

Louisville Division

4400 Bishop Lane, Suite 112
Louisville, KY 40218
Phone: 502-459-7475
Fax: 502-459-7633

Nashville Division

334 Free Hill Road, Suite B
Hendersonville, TN 37075
Phone: 615-822-3030
Fax: 615-822-3031

www.mgnewell.com

www.newellautomation.com