



We Make It Work Better.



PRODUCTS AND SERVICES

Providing sanitary processing equipment and customized services

Since 1885

www.mgnewell.com

www.newellautomation.com

M.G. Newell is a full-service provider of sanitary equipment for the food, beverage, dairy, pharmaceutical and personal care industries. We carry a broad range of pumps, valves, fittings and other sanitary processing supplies. In addition, we also work with customers to design and fabricate cost-effective, customized systems to fit their space requirements.

Our customers represent the world's largest manufacturers of food, beverages, pharmaceuticals and personal care products. To help them meet consumer expectations, we strive to support their goals of sanitary processing from start to finish.

Our engineers build sanitary design into every system, from pump carts to valve clusters to batching systems to new greenfield installations. Our field technicians conduct instrument repair, preventive maintenance, calibration of existing equipment and assist in the start-up of new, on-site installations.

Our Newell Automation controls team will identify the appropriate instrument and control functionality for your process. With automation hardware, software controls, control panel design and fabrication, we provide turnkey solutions for CIP, batching, blending and other processes.

Greensboro Division/Corporate

336-393-0100

Louisville Division

502-459-7475

Nashville Division

615-822-3030

sales@mgnewell.com

We Make It Work Better.



CONTENTS

About Us	3
Fittings	4
Tri-clamps	5
Valves	6
Pumps	8
Flexible connectors	10
Hoses	11
Tanks	12
Scales	13
Instrumentation	14
Filtration	15
Mixers	16
Heat Exchangers	18
Steam/Heating	19
CIP/COP	20
Homogenizers	22
Specialty Items	23
Design, Fabrication, Installation	25
Calibration and Maintenance	28
Newell Automation	30



We Make It Work Better.

It's not just a tag line; it's a commitment we make to provide unparalleled service and quality parts through every phase of our relationship with you.



The company was founded by Myron G. Newell, who came to Greensboro from Elmira, New York and opened a store in 1885 selling everything from hand churns to buggies. The company was first incorporated in May 1908. In 1913, it added farm machinery to its product line. At the suggestion of Newell's son, Burton M. Newell, Sr., the company began specializing in the dairy business in the early 1920's.

Over the years, the company has expanded into the food, beverage, pharmaceutical, and personal care industries, having evolved from being a full-line distributor to a full-service systems integration company.

Currently, M.G. Newell has three locations: Greensboro, NC, Louisville, KY and Nashville, TN. With the addition of the Louisville and Nashville division, the original M.G. Newell now functions as the corporate headquarter and houses the Greensboro division.

Providing sanitary processing solutions since 1885



Clamps	O-rings
Ferrules	Elbows
Gaskets	Reducers
Strainers	Sight Glasses



1/2"-6" sizes

Tri-clamp or bevel seat

All stainless—304 or 316L

DIN connections available

Cam-locking style clamps

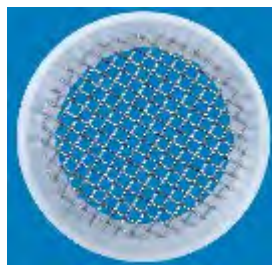
Three-piece reusable clamp connections

Metal-detectable gaskets

Buna N, EPDM, Silicone, FKM/

Viton®, PTFE/Teflon®

Screen gaskets



The clamped union is the critical element for evaluating pipeline pressure capacity. Be certain your pressure ratings are for the union—not just the clamp.





Greensboro | 336-393-0100

Louisville | 502-459-7475

Nashville | 615-822-3030

Single pin tri-clamps

Double pin tri-clamps

High pressure clamps

Squeeze clamps

Smart Clamp™



Sizes range from 1/2" to 12" for most types

Squeeze clamp—1" to 4" size

304 or 316 SS



Torque tools can be used to ensure a constant amount of force and eliminate over-tightening.



Butterfly valves

Diaphragm valves

Ball valves

Check valves

Mix-Proof valves

2-Way valves

Shut Off and Divert
valves

Zero-Static valves

Angle Seat valves

Block Body and Custom
Blocks



ASTM 316 or 304 stainless steel construction

Sanitary tri-clamp ends

Easy to install and maintain

Materials comply with FDA, USDA and 3A requirements

USP class 6 materials available

FDA elastomeric seats available

Mix-Proof valves for continuous processing

Sizes up to 4"



The EnviZion diaphragm valve features a quick change bonnet that requires no tools and reduces the time required for diaphragm changes by 90%!

Greensboro | 336-393-0100

Louisville | 502-459-7475

Nashville | 615-822-3030

Mix-proof valves allow flow of two different media through the same valve simultaneously without the potential for mixing.



Manual actuators

Pneumatic actuation

Valve communication platforms—

FieldBus, HART, AS-Interface

Networking/wireless link options
available



www.mgnewell.com

sales@mgnewell.com

www.newellautomation.com

PD pumps

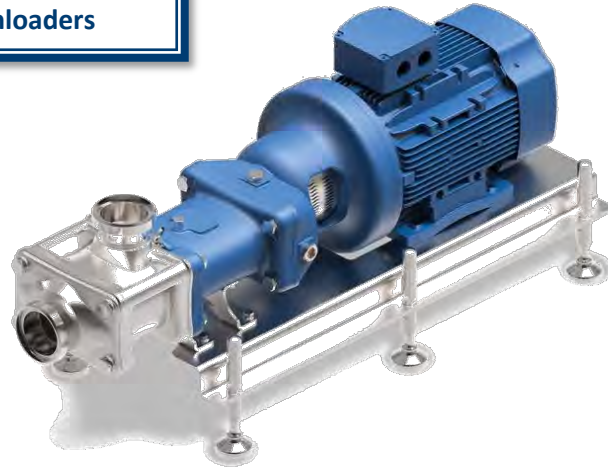
Centrifugal pumps

Twin-Screw pumps

Diaphragm pumps

Progressive cavity pumps

Drum/Tote unloaders



ASTM 316 stainless steel construction

Pumps for a wide range of product viscosities—up to 1,000,000 cps - and soft or hard particulates

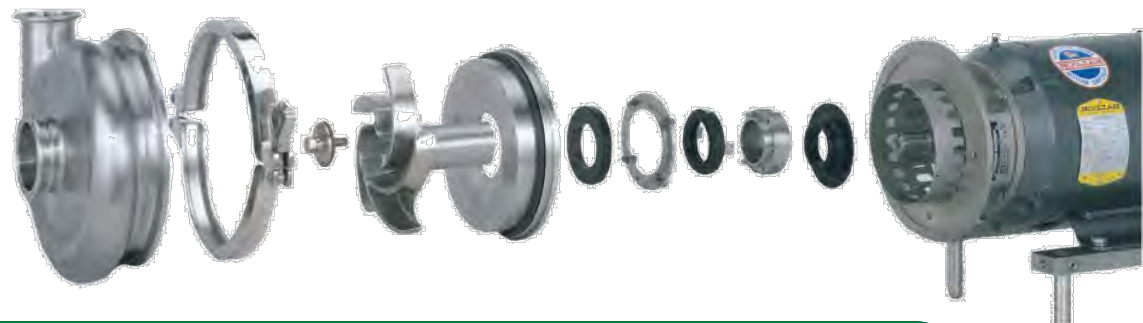
FDA, USDA and 3A compliant

USP class 6 materials available

SPX Flow Certified Pump Repair Center

Seal kits and maintenance programs

Pump rebuild and remanufacture



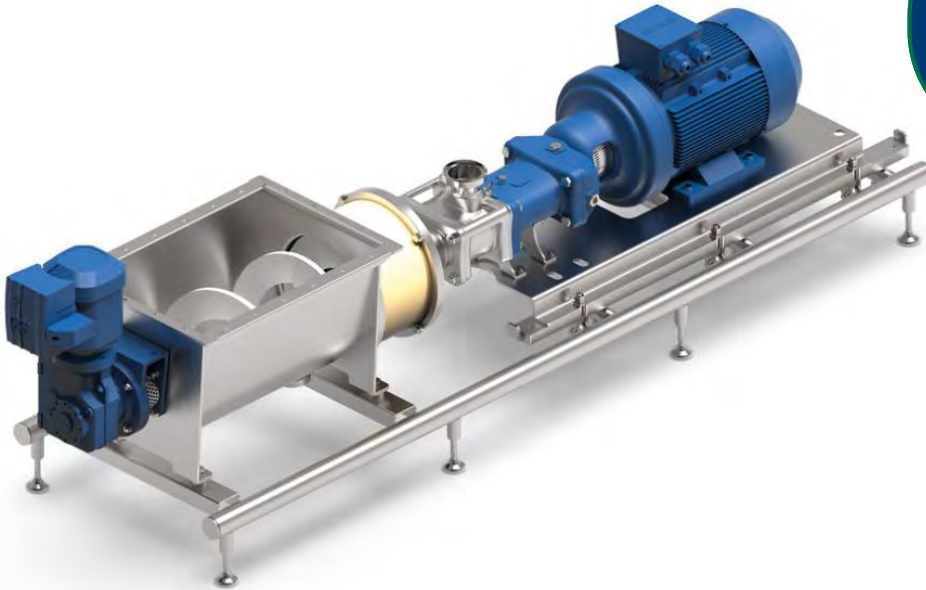
Waukesha pumps are constructed with larger diameter shafts for greater strength and stiffness; extended life outer seals and heavy duty bearing frames.



Greensboro | 336-393-0100

Louisville | 502-459-7475

Nashville | 615-822-3030



The feed screw will gently feed high-viscosity, non-flowable media into your twin screw pump.

Pump carts with optional VFD control
or remote mount pendants

Stainless steel frame

Electric drum pumps/Piston pumps

Stainless motors

Sanitary pump tubes



PUMPS

9



www.mgnewell.com

sales@mgnewell.com

www.newellautomation.com

Dust-Free and Leak-Free

Easy installation and
replacement

Explosion resistant

Transparent connections



Non-permeable connectors made from clear, ether-based polyurethane

Will not fracture with flexing

Options include static dissipation, high pressure transfers, black out covers, Kevlar® covers, PTFE covers

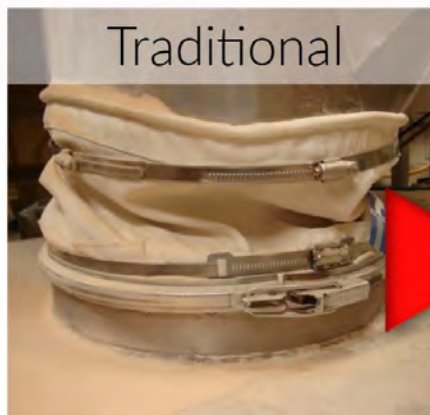
304 or 316 spigots available

Available in diameters from 4" - 65"

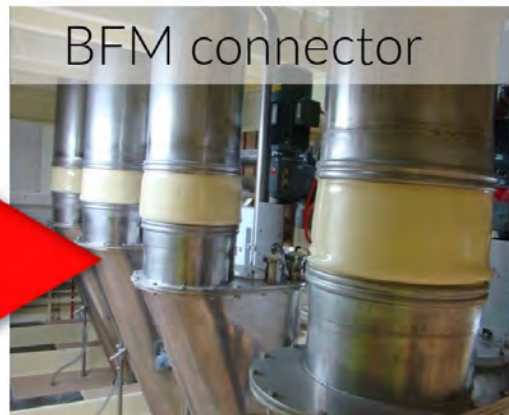
Connector lengths available from 3" - 19 1/2 feet

FLEXIBLE CONNECTORS

10



Traditional



BFM connector



Flexible connectors provide a safe and hygienic alternative to hose clips



Greensboro | 336-393-0100

Louisville | 502-459-7475

Nashville | 615-822-3030

Hoses

Wash Down Stations

Hose support/fitting bumper

Sight glass/flow indicator



Three-piece hose assemblies are reusable and offer a complete sanitary coupling!



1"-4" diameter, any length

Reducers

Laser etching for permanent traceability and identification

Rubber, silicone, PVC or fluoropolymer lined

Molded, jacketed and/or grounded hoses available



Processing kettles

Pressure tanks

Storage silos

Fermenters

Balance tanks

CIP/COP tanks



Single-wall or jacketed designs

Fully customizable

Standard bottom configurations—conical, dish, flat-sloped

Standard top configurations—open, dome or bridge & cover

Various agitation options available

Electropolishing and passivation available

Tanks can be configured to meet ASME BPE design and construction.





Greensboro | 336-393-0100

Louisville | 502-459-7475

Nashville | 615-822-3030

Flat-bed scales are easy and safe for workers and have very low space requirements due to their low-profile design (no pits required).



Hygienically designed EHEDG certification

Easy to clean

Low maintenance cost

Scales—inline, floor, bench

Load cells

Check weighers

Metal detection



www.mgnewell.com

sales@mgnewell.com

www.newellautomation.com

Flow	Pressure
Level	Conductivity
Temperature	Turbidity



All stainless steel, rugged construction

Compliant with FDA, PMO and USDA

USP class 6 materials available

Installation of metered system

Chart recording

Batch controllers



Calibration services are available at your location or in our Greensboro and Louisville offices.





Greensboro | 336-393-0100

Louisville | 502-459-7475

Nashville | 615-822-3030



Filter housings are ASME Code certified. High purity housings excel in critical and demanding applications requiring high purity, maximum durability, ease-of-use and exceptional value .

Pleated and membrane filter cartridges

Available in a wide range of configurations and micron sizes

Membrane filters available in PES, PS, PTFE, or nylon

Pleated filters available with glass or PP fiber media



FILTRATION

15



Lenticular filters

SS Filter Housings



www.mgnewell.com

sales@mgnewell.com

www.newellautomation.com

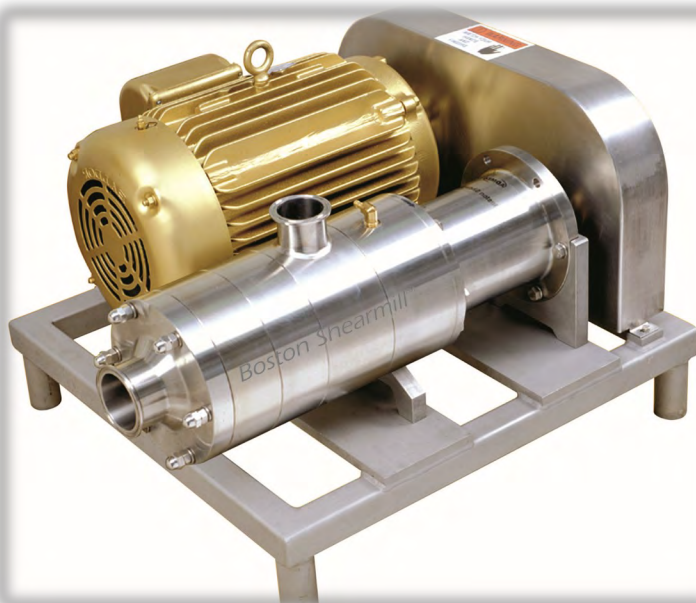
In-Tank High or Low Shear Mixing

In-Line Mixing

Shearmill

Powder induction

High purity magnetic mixers



Whether dissolving, dispersing or deagglomerating, we have the right mixer for your application.



All stainless steel, hygienic construction

3A and USDA compliant

Simplified, sealed drive assemblies

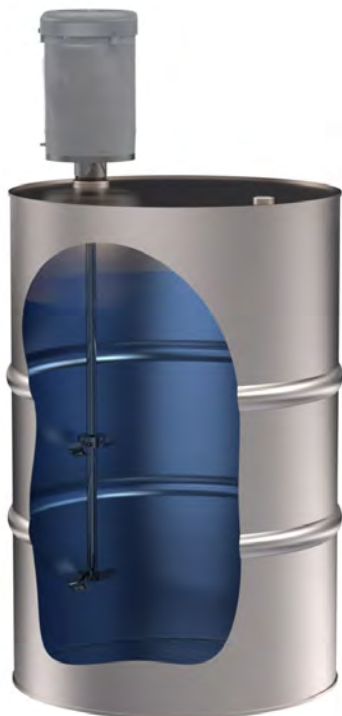
Clean-In-Place capability

Reduced energy consumption and mixing time

Greensboro | 336-393-0100

Louisville | 502-459-7475

Nashville | 615-822-3030



Drum, tote and tank mixers for
top entry or side entry

Portable or fixed mount

Portable mixer stands



In tank design, it is critical that the impellers (and baffles when used) are in the correct position to insure proper mixing



Plate and frame HEX

Scrape surface HEX

Shell and Tube HEX

Cooker-Cooler



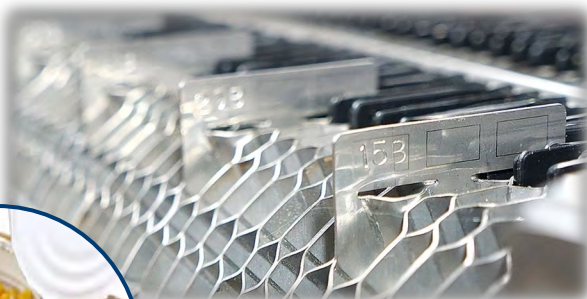
Heavy-duty stainless steel designs

Sanitary—3A and FDA compliant

Efficient and flexible configurations

Available as skidded systems

Full service maintenance and repair



By controlling the thermal processing properties, producers can improve product viscosity, color, texture, and sensory features such as taste, smell and mouth feel.

Greensboro | 336-393-0100

Louisville | 502-459-7475

Nashville | 615-822-3030

Steam traps

Clean steam

Skidded utility sets

In-line steam injection

SS In-line water heaters

Custom fabricated heat utility systems

Cooking/hot fill/aseptic systems

Precise temperature control

Energy efficient



STEAM/HEATING

19

A steam trap is an automatic valve designed to stop the flow of steam so that heat energy can be transferred, and the condensate and air can be discharged as required.



CIP/COP skidded systems

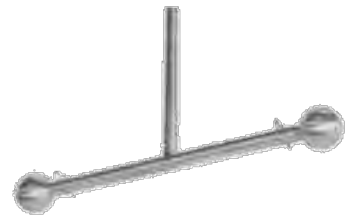
Tank cleaning

Spray balls

Strainers

COP baskets, totes, trays

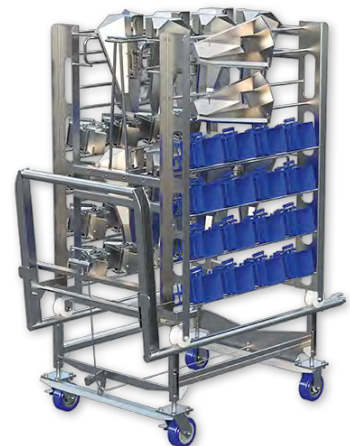
Supply tubes



Cabinet and tunnel washers

Custom designed racks for buckets, totes, trays and more

Custom spray ball patterns available



To achieve a sanitary clean, the basic cleaning principles of TACT—Time, Action, Chemical and Temperature—must be understood.



Greensboro | 336-393-0100

Louisville | 502-459-7475

Nashville | 615-822-3030



If there are several different products running through a process, the goal is to optimize the cycles down to the minimum time required to clean the equipment following each product that runs through the process.



Single or multi-tank systems
Single use or water/detergent reuse
CIP/COP combination systems



Effective and economical cleaning for any size and shape tank
Programming and controls for automated cleaning



APV Gaulin and Rannie brands
Mono-block or 3-piece housing
Low, medium, or high pressure applications

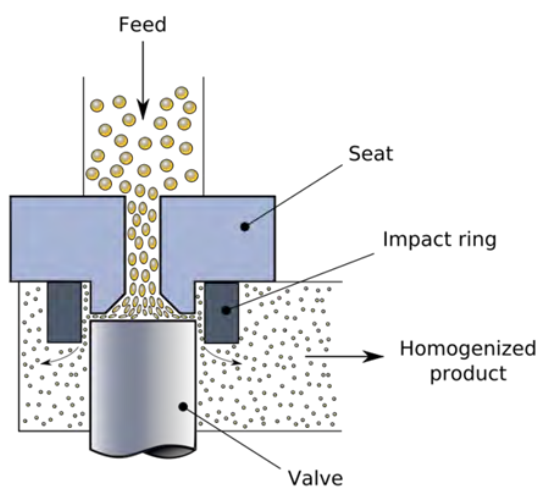


Service-friendly

Easy to operate

Large selection of standard options—plungers, packings, pump valves, valve seats and seals—for your application

Optional sound-proof cabinets



Homogenizers can improve product stability, uniformity, consistency, viscosity, shelf life, improve flavor and color.



Greensboro | 336-393-0100
Louisville | 502-459-7475
Nashville | 615-822-3030

Slip-resistant grating floors and stair treads provide maximum traction even in wet and oily environments.

Non-slip flooring and grates

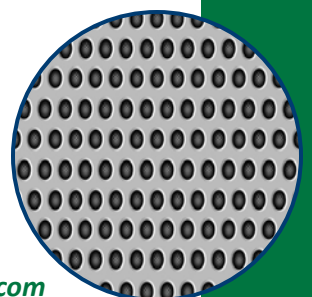
Stair treads and covers

Ladder rungs and covers

Armoloy® coating for superior
metal protection, friction, wear and
corrosion resistant solutions



Armoloy® coatings make food processing equipment last longer and clean up faster. Coatings are USDA and FDA approved for food contact applications.



Liquid gassing and degassing systems

CO₂ and O₂ measurement

Optional bumper guard



Different membrane sizes allow for a wide range of flows, from as little as 5 gpm to over 1000 gpm.



Portable or inline systems

Measures headspace or liquid content

Fast, high accuracy and measurement stability

Suitable for water, soda, beer or other beverages



Greensboro | 336-393-0100

Louisville | 502-459-7475

Nashville | 615-822-3030

Pump carts provide flexibility and cost savings. They are designed with bead-blasted stainless steel base and frame and locking caster wheels for durability.

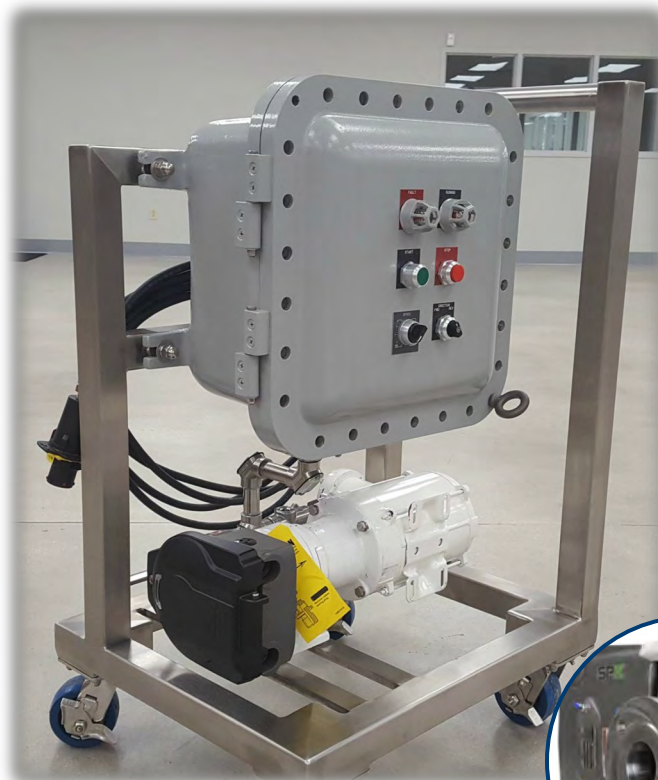


Pump carts with optional VFD control
or remote mount pendants

Stainless steel frame

Pump lift stations

Stainless motors





Valve clusters	Inline blending
Utility sets	Filtration
Holding tubes	Pasteurization
CIP/COP	Batching
Temp control	Pump carts
Homogenization	Heat exchanger



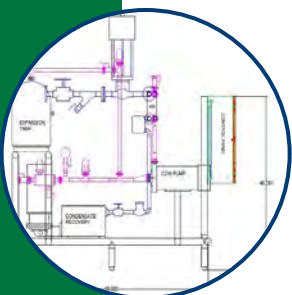
**Greenfield and upgraded
installations**

Custom engineered designs

Skid-mounted systems



*Our engineers build safety and sanitary design into every system—
all while meeting your budget!*

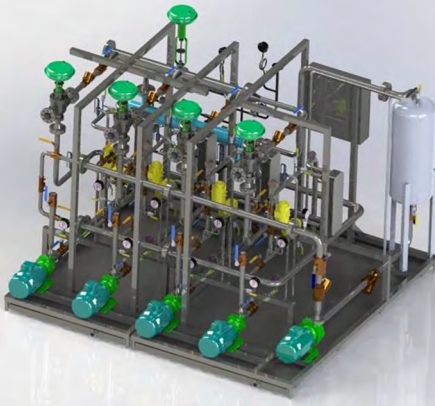


Greensboro | 336-393-0100

Louisville | 502-459-7475

Nashville | 615-822-3030

Skidded systems offer faster time to market, higher quality fabrication and provide flexible, efficient use of space.

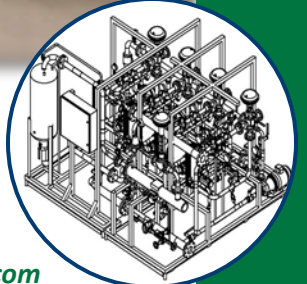


Optional designs are available to meet NEMA-4 and/or explosion-proof environments.
Our systems meet and often exceed compliance to FDA, USDA and/or 3A standards.

www.mgnewell.com

sales@mgnewell.com

www.newellautomation.com



DESIGN, FABRICATION, INSTALLATION

27

Calibration services for:

Pressure
Conductivity
Level
Temperature
pH
Chart recorders

Flow including magnetic, turbine, mass and PD

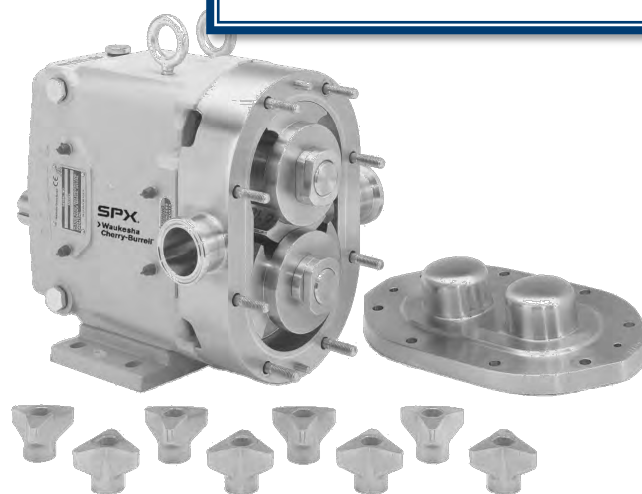


Pump maintenance

Valve maintenance

Homogenizer maintenance

SPX Flow Certified Repair Center



As a Certified Repair Center, M.G. Newell has qualified factory service technicians on staff with over 30 years of experience.



Greensboro | 336-393-0100

Louisville | 502-459-7475

Nashville | 615-822-3030



Calibration tools are maintained to NIST traceable standards.

Newell
University



Newell University is a seminar series aimed at educating plant engineers, operation managers, maintenance managers, QC personnel and plant leadership. The sessions are technical in nature in small class room settings using hands-on and real life examples. We offer these classes at our office or at your facility.



PLC Design and Programming

HMI Design and Programming

Control Panel Design and
Fabrication

Audits and Retrofits



UL-508A Certified Panel Shop

Panels meet NFPA, NEC and UL-508 regulations

NEMA 4x and explosion proof panels optional

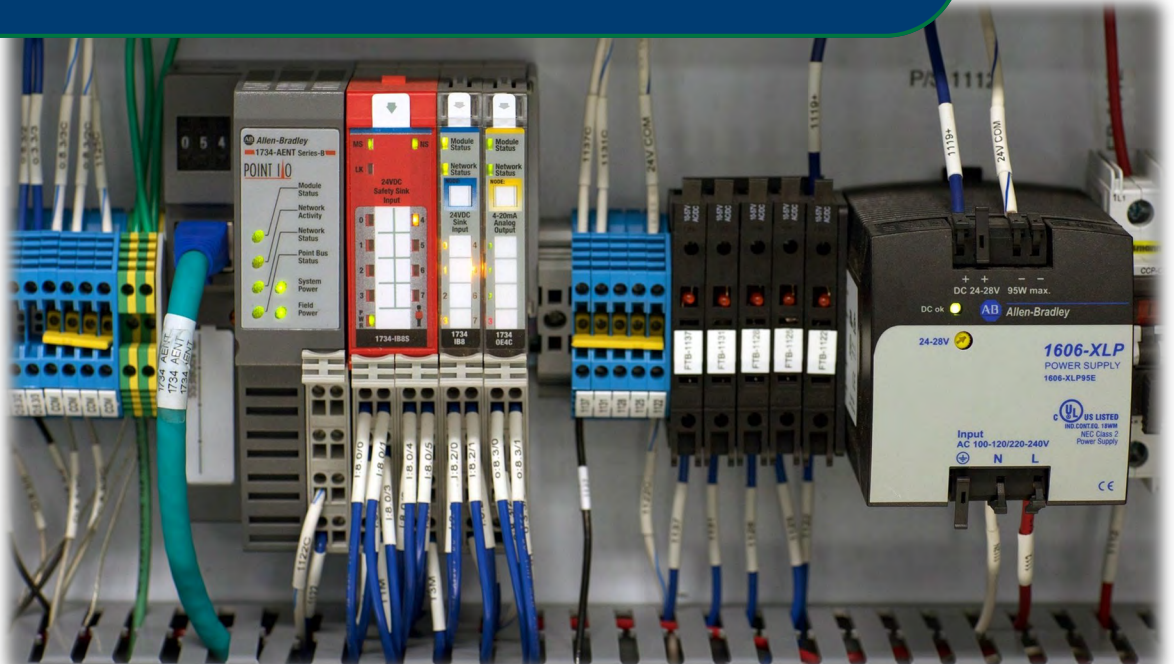
Factory and Site Acceptance testing

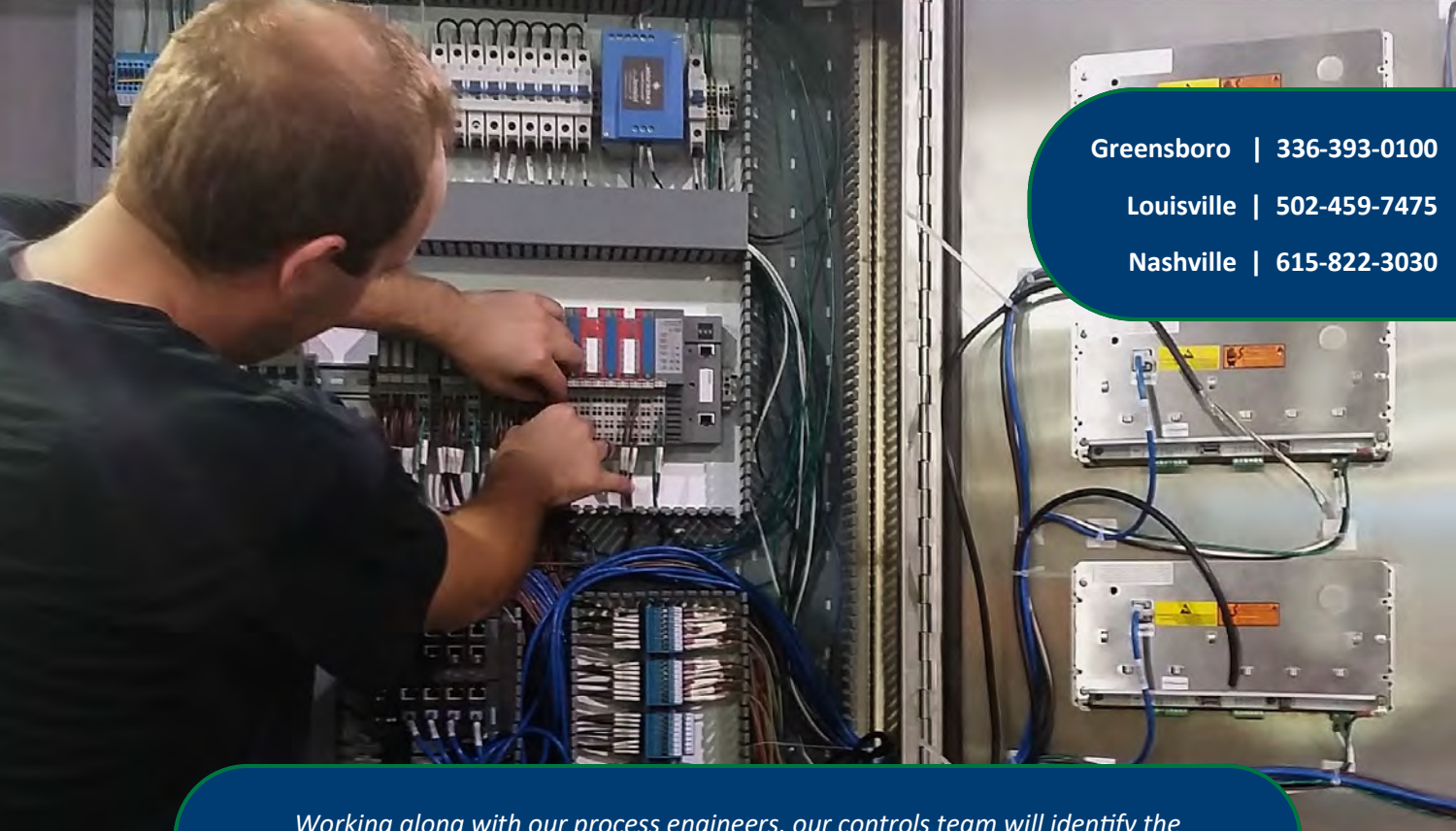
SCADA systems

Rockwell Automation Recognized System Integrator

Automating flawed or inefficient processes is similar to 'garbage in, garbage out'

- Engineer's Proverb





Greensboro | 336-393-0100

Louisville | 502-459-7475

Nashville | 615-822-3030

Working along with our process engineers, our controls team will identify the appropriate instrumentation and control functionality for your process.

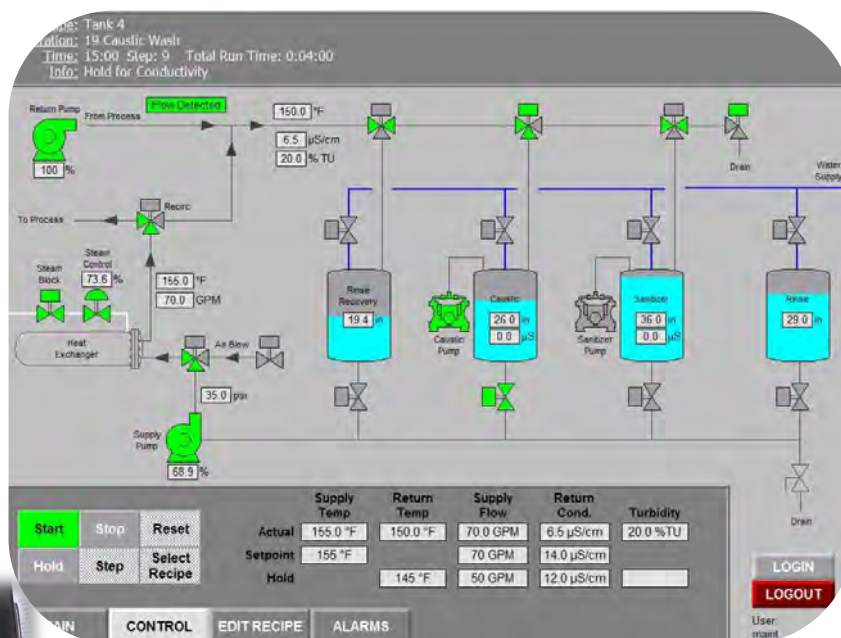
Hardware and software specification

Program development

Piping and Instrumentation drawings

Documentation

Support and training



NEWELL AUTOMATION

31



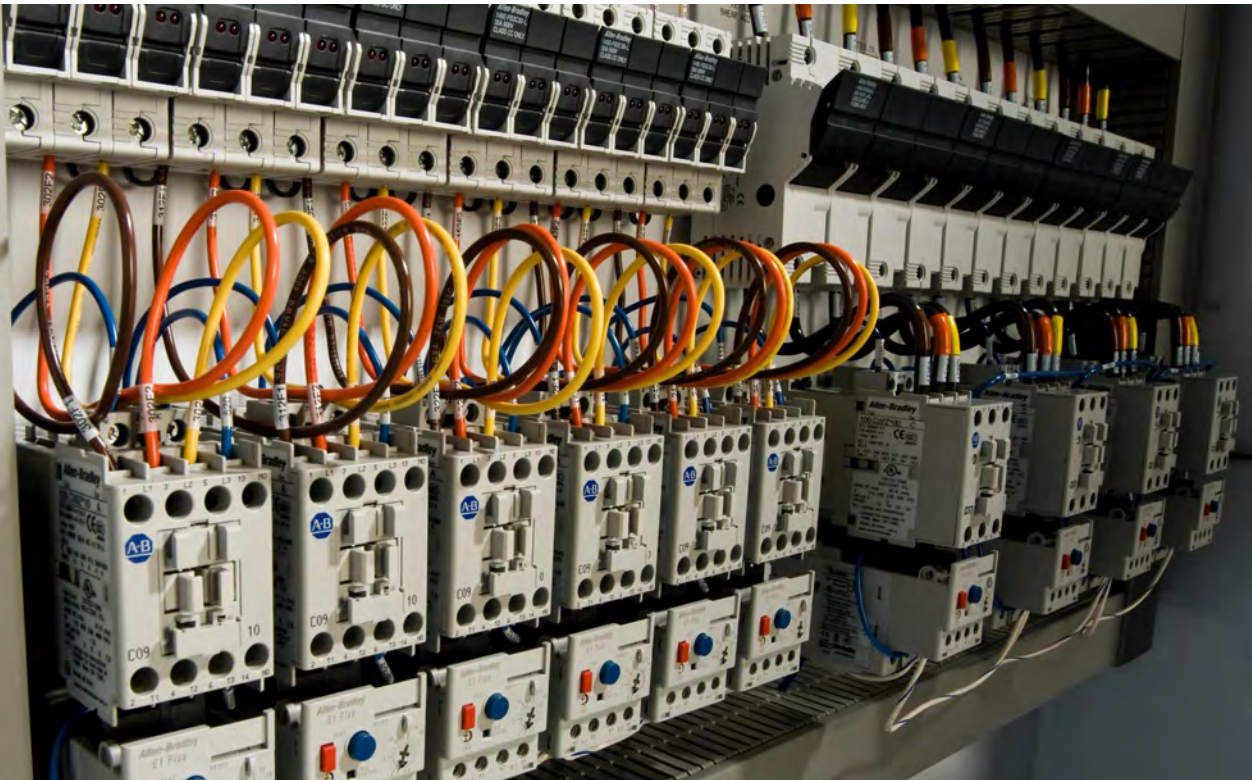
www.mgnewell.com

sales@mgnewell.com

www.newellautomation.com

MGNewell

We Make It Work Better.



Providing sanitary processing equipment and customized services since 1885

Greensboro Division
Corporate Headquarters
301 Citation Court
Greensboro, NC 27409
Phone: 336-393-0100
Fax: 336-393-0140

Louisville Division
4400 Bishop Lane, Suite 112
Louisville, KY 40218
Phone: 502-459-7475
Fax: 502-459-7633

Nashville Division
334 Free Hill Road, Suite B
Hendersonville, TN 37075
Phone: 615-822-3030
Fax: 615-822-3031

Email: sales@mgnewell.com

www.mgnewell.com

www.newellautomation.com