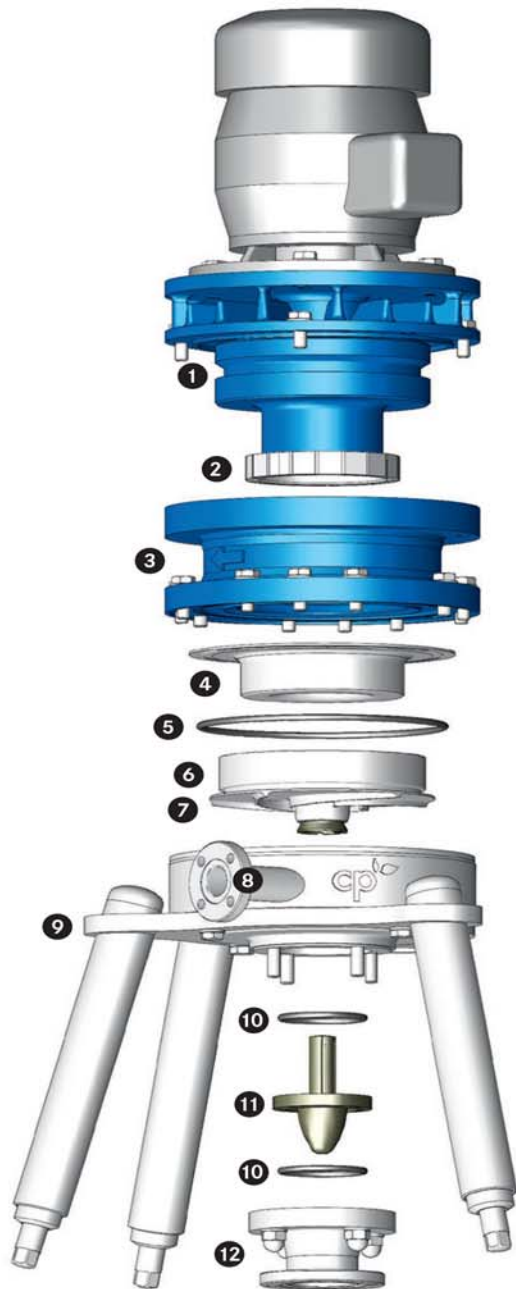


# MKP-Bio – Stainless Steel Magnetic Drive Biotech Process Pump

## Efficient – Hygienic – EHEDG-Compliant



### Technical data

Capacities (min./max.)	0.5 to 60 m <sup>3</sup> /h   2.2 to 264.2 gpm
Heads (min./max.)	5 to 80 m   16.4 to 262.4 ft
Temperatures (min./max.)	-20 to +150°C   -4 to +302°F
Kinematic viscosities	0.5 to 350 mm <sup>2</sup> /s   cSt
Solids handling	after technical clarification

### Directives

EC Machinery Directive  
 EC ATEX Directive  
 Hygiene standards 3-A, EHEDG  
 FDA 21 CFR §177, USP Class VI

### Standards

DIN EN ISO 12462  
 DIN EN ISO 5199  
 DIN EN ISO 15783

- 1 Secondary seal (optional)
- 2 Outside magnetic coupling attached to the flywheel mass (on atmosphere side)
- 3 Lantern
- 4 Hermetically sealed containment shell (primary seal)
- 5 Casing seal
- 6 Driven magnet assembly attached to impeller (on product side)
- 7 Impeller
- 8 Discharge port
- 9 Pump casing with tripod
- 10 O-ring
- 11 Hub
- 12 Suction port